

In This Issue

- SPI Facilitates Strategic Planning Process For Greater Augusta Sports Council
- Randy Parton Theatre Selects SPI to Provide Major Sponsorship Services
- SPI Assists in Aquatics Study for City of Raleigh
- Emily Kopelman Joins SPI

SPI Facilitates Strategic Planning Process for Greater Augusta Sports Council



The Greater Augusta Sports Council retained Sports & Properties, Inc. to facilitate their 2007-2010 Strategic Planning process. In their 15 years of existence, the Greater Augusta Sports Council has generated tens of thousands of roomnights for the local tourism economy. In crafting the new plan, SPI facilitated meetings of the GASC Board of Directors, local sports organizers, hoteliers, and community leaders, to provide valuable insights and direction.

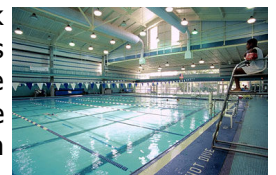
Randy Parton Theatre Selects SPI to Provide Major Sponsorship Services



Randy and Deb Parton, and their management company Moonlight Bandit Productions, have selected SPI to provide major sponsorship services for the Randy Parton Theatre. Owned by the City of Roanoke Rapids, the Randy Parton Theatre is a new 1,500-seat performing arts venue located on I-95 in Roanoke Rapids, North Carolina. The Theatre is the centerpiece of the Carolina Crossroads Music and Entertainment District and is projected to be a premier entertainment destination in the Eastern United States. The Grand Opening performance is scheduled for Thursday, July 26.

SPI Assists in Aquatics Study for City of Raleigh

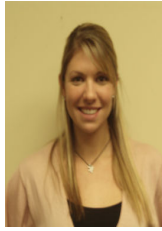
Sports & Properties, serving as a member of the Szostak Design Consulting Team, is working on an Aquatics Study for the City of Raleigh which will service as the City of Raleigh's aquatics master plan. SPI is responsible for identifying potential non-public revenues for plan projects. The City last conducted a pool study in 1976, at a time when only two public pools existed in Raleigh.



Contact Us

www.sportsproperties.com
info@sportsproperties.com

Emily Kopelman Joins SPI



Sports & Properties is happy to announce the hiring of Emily Kopelman as Sales Coordinator. A graduate of North Carolina State University, Emily joins SPI on a full-time basis after working as an intern in the fall of 2006. In her role as Sales Coordinator, Emily works with clients in sponsorship sales. Clients include performing arts centers, commercial developments, and entertainment destinations.